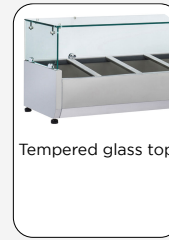




DETAILS



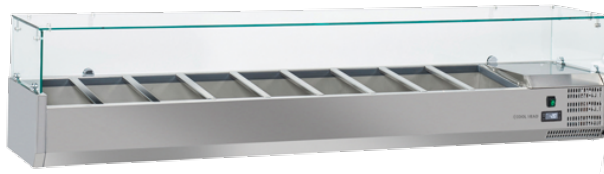
Tempered glass top



Digital Thermostat



Higher stainless steel adjustable feet as optional



GENERAL FEATURES

Refrigerated horizontale showcase (Pans GN1/3)	•
Stainless Steel exterior and interior	•
Static Cooling	•
Automatic compressor cycle defrost	•
Single copper pipe evaporator (No welding in the foaming)	•
Digital Thermostat	•
N.4 Adjustable feet	•
Spacer set included	•
GN1/3 Pans are not included with the unit	•
Tempered glass top	•
Energy efficiency class: -	•

TECHNICAL SPECIFICATIONS

Capacity	83 L
Temperature	+2° ~ +8°C
Consumption	2 kWh/24h
Rated Power	160 W
Noise level	56 dB(A)
Net Weight	56 Kg
Gross Weight	90.5 Kg
External Dimensions (WxDxH mm)	2000x395x440
Internal Dimensions (WxDxH mm)	1650x310x163
Packaging dimensions (WxDxH mm)	2140x465x460
Loading quantities 20'/40'/40'HQ	60/125/125

CERTIFICATION

CE  RoHS

PRODUCT DIMENSIONS

